



# Neuro- ophthalmology

Cinthy Pillai, M.D.

Associate Professor of Neurology & Ophthalmology

New York University School of Medicine

---

What do you need for vision?



---

# What do you need for vision?

- Many different components
  - Eyes
  - Eye muscles
  - Optic nerve
  - Brain vision pathways
  - Balance system

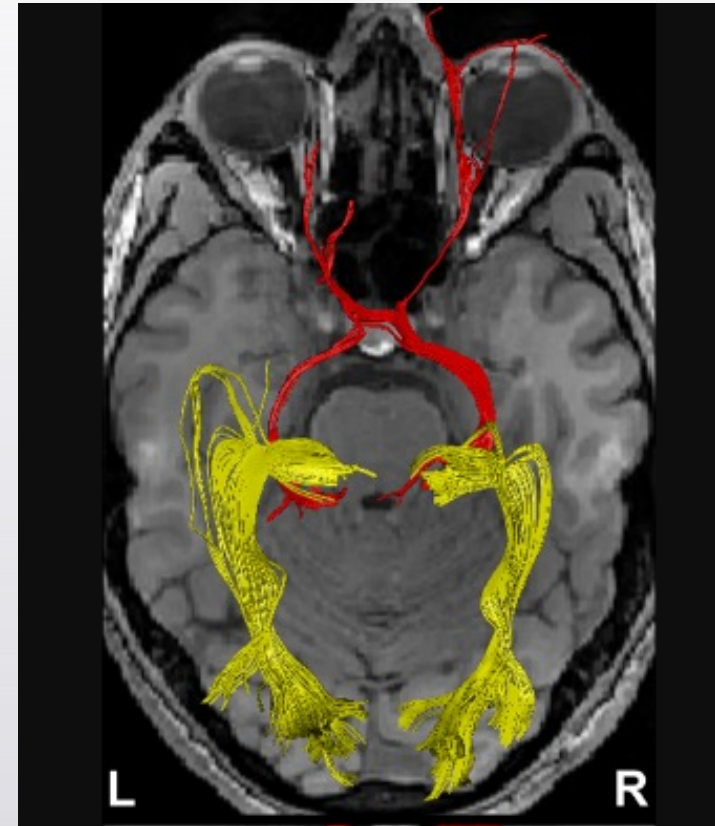
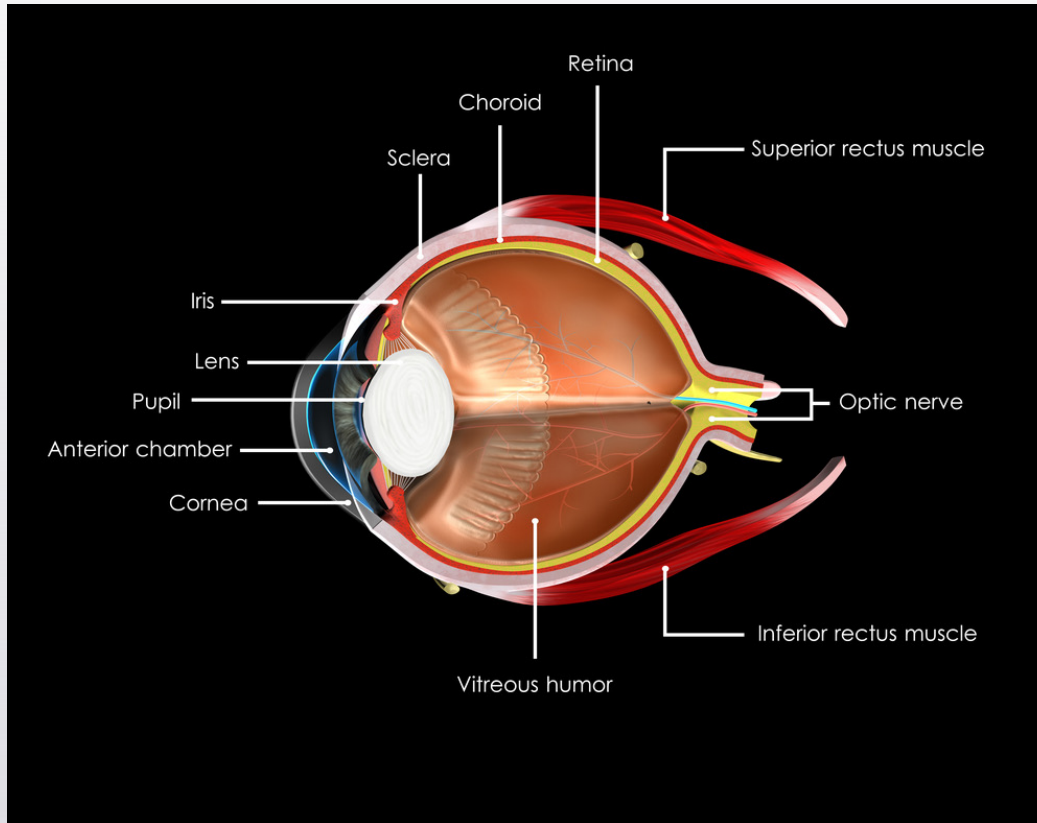


# Neuro-ophthalmology

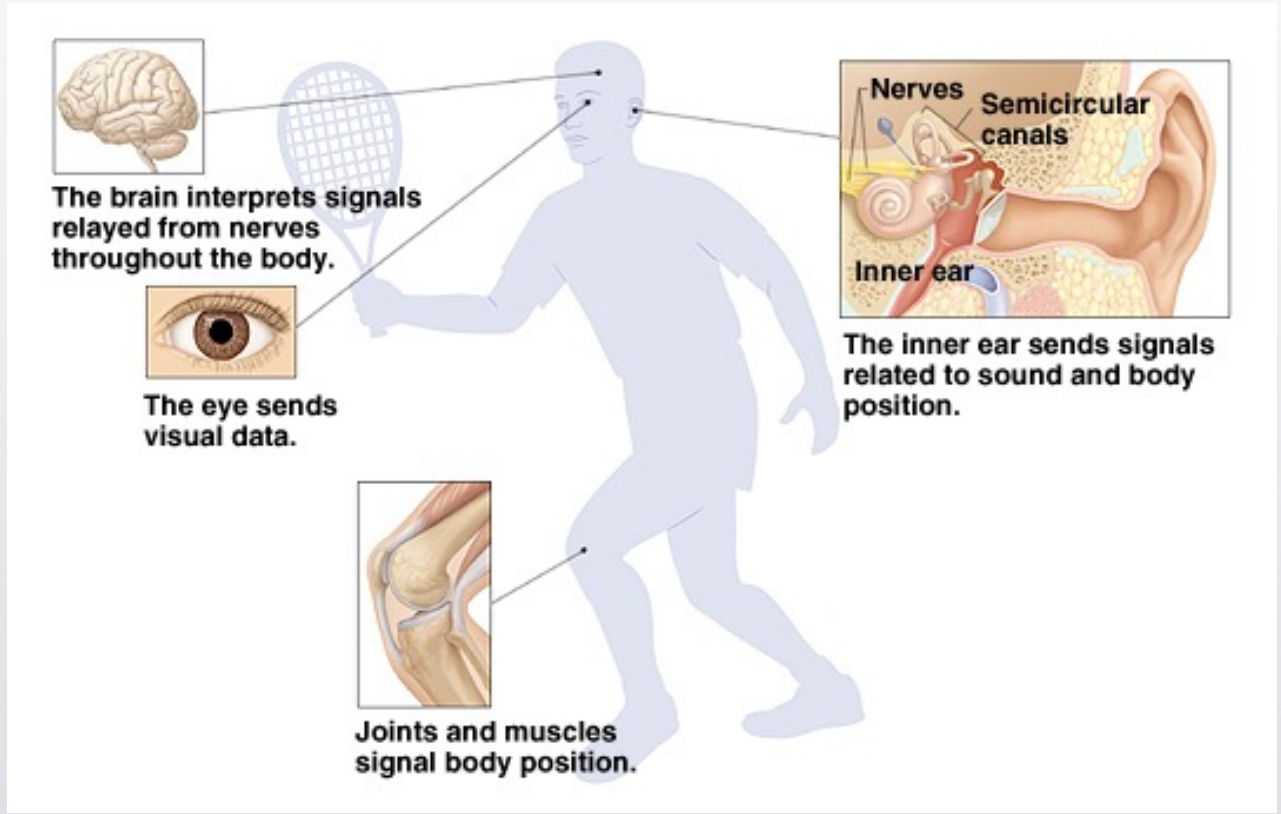
- vs Ophthalmology
- Conditions affecting the vision nerves, brain vision pathways, and eye movements



# What do you need for vision?



# Vision and Balance





## Bring...

- Your glasses (distance and near)
- Outside MRIs on CD with reports
- Visit notes
- Questions
- Companion
- Sunglasses and plan to get home (eye might be dilated)

# Neuro-ophthalmic Examination

- Visual acuity
- Color vision
- Pupillary light reflex
- Optic nerve appearance
- Extraocular muscles (double vision)
- Stereoacuity (depth perception)
- Neurologic examination





---

# Neuro-ophthalmic Testing Visual Field

- Checks peripheral vision
- Important for driving



---

# Neuro-ophthalmic Testing Optical Coherence Tomography

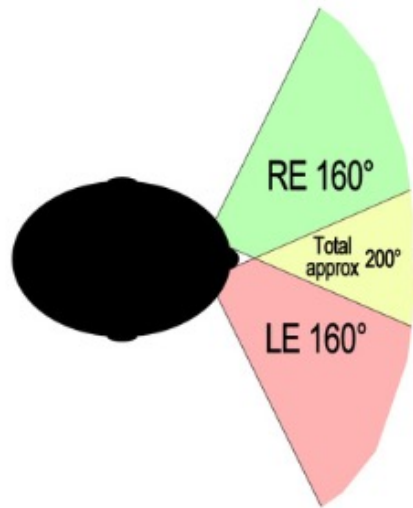
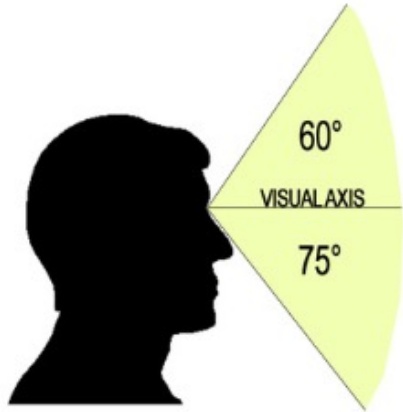
- OCT
- Health of the optic nerve



# Neuro-ophthalmic Management

- Symptomatic Management
  - Prisms
  - Lens blurring
  - Injections
  - Vision therapy
- Surgical management



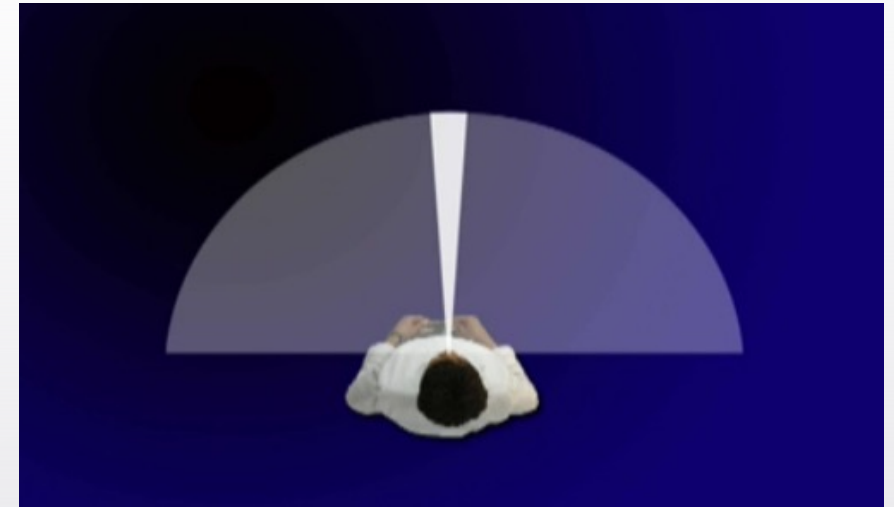


## NEW YORK

- No driving with double vision
- VA at least 20/40 in one eye (not less than 20/70)
- Binocular horizontal visual field of least 140 degrees

### Possible restrictions

- Eyeglasses, bioptic telescopic lens
- Sunrise to sunset
- Not during rush hour
- Geographical restriction
- Prohibit freeway driving
- Require special mechanical devices, or extra side mirror
- Require support to ensure safe driving position



# Neuro-ophthalmology

- Follow up is a team approach
- Ophthalmology (Strabismus, Pediatric, Orbit)
- Optometry


<https://www.nanosweb.org/i4a/pages/index.cfm?pageid=1>

North American Neuro-Ophthalmology Society

ABOUT DEI 2023 MEETING MEMBERSHIP PATIENTS CAREER CENTER EDUCATION

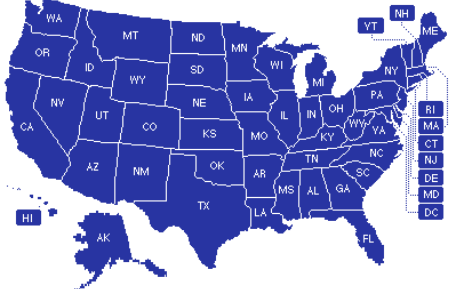
**Find a Neuro-Ophthalmologist**  
Patient Brochures for Patients  
Patient Brochures for Clinicians  
What is a Neuro-Ophthalmologist

# SPOTLIGHT

 **NANOS NEWSLETTER**  
WWW.NANOSWEB/NANOSSPOTLIGHT

QUICK LINKS: Practice Support Tools | Patients | Find a Neuro-Ophthalmologist | News

## FIND A NEURO-OPHTHALMOLOGIST



Country Search

State Search



# Thanks for listening!



NYU Langone Provider  
**Doria M. Gold, MD**  
Neuro-Ophthalmology

Treats Adults

NYU Neurology Associates  
222 East 41st Street, 10th Floor  
New York, NY 10017 [📍](#)

212-263-7744



NYU Langone Provider  
**Steven L. Galetta, MD**  
Neuro-Ophthalmology

Treats Adults

NYU Neurology Associates  
222 East 41st Street, 10th Floor  
New York, NY 10017 [📍](#)

212-263-7744



NYU Langone Provider  
**Janet C. Rucker, MD**  
Neuro-Ophthalmology

Treats Adults

NYU Neurology Associates  
222 East 41st Street, 10th Floor  
New York, NY 10017 [📍](#)

212-263-7744



NYU Langone Provider  
**Scott N. Grossman, MD**  
Neuro-Ophthalmology, Epilepsy

Treats Adults

NYU Neurology Associates  
222 East 41st Street, 10th Floor  
New York, NY 10017 [📍](#)

212-263-7744



NYU Langone Provider  
**Laura J. Balcer, MD**  
Neuro-Ophthalmology

Treats Adults

NYU Neurology Associates  
222 East 41st Street, 10th Floor  
New York, NY 10017 [📍](#)

212-263-7744



NYU Langone Provider  
**Cinthi Pillai, MD**  
Neurology, Neuro-Ophthalmology

Treats Adults

NYU Neurology Associates  
222 East 41st Street, 10th Floor  
New York, NY 10017 [📍](#)

212-263-7744